

LEVEL 2 CHILDREN'S CARE, PLAY, LEARNING AND DEVELOPMENT: CORE

Why choose Level 2 Children's Care, Play, Learning and Development: Core?

This qualification is aimed at post-16 learners in Wales, working or seeking to work, in regulated childcare settings with families and children under the age of 8 and/or NHS children's services for those working with families and children 0-19. This includes child health settings

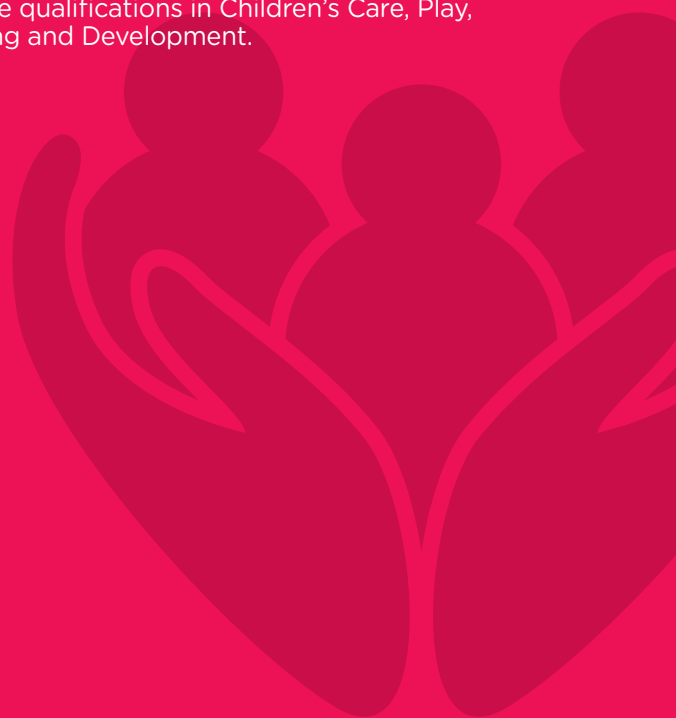
What will I study?

The qualification covers the fundamental knowledge and understanding of the new All Wales Induction Framework for Early Years and Childcare and reflects a range of different roles and ages.

The content covers:

- the principles and values of children's care, play, learning and development
- health, well-being, learning and development
- professional practice as an early years and childcare worker
- safeguarding children
- health and safety in children's care, play, learning and development

Learners are expected to have completed this qualification prior to, or alongside level 2 and 3 practice qualifications in Children's Care, Play, Learning and Development.



LEVEL 2 CHILDREN'S CARE, PLAY, LEARNING AND DEVELOPMENT: CORE



What skills will I develop?

Completing this qualification enables learners to:

- develop their knowledge and understanding of the core principles and values which underpin children's care, play, learning and development practice
- develop their knowledge and understanding of ways of working in the children's care, play, learning and development sectors
- develop knowledge and understanding which informs effective practice within children's care, play, learning and development
- have the core knowledge and understanding to support progression on to further study or employment within children's care, play, learning and development.

How will I be assessed?

This qualification is assessed through a combination of internal and external assessment. Candidates must successfully complete:

- **three externally set, internal scenario-based assessments; and**
- **one externally set, externally marked multiple-choice test.**

Careers with Level 2 Children's Care, Play, Learning and Development:

This qualification supports learners to progress to further qualifications including the following qualifications within the suite of Health and Social Care, and Childcare qualifications for Wales.

- Level 2 Children's Care, Play, Learning and Development: Practice
- Level 2 Children's Care, Play, Learning and Development: Practice and Theory
- Level 3 Children's Care, Play, Learning and Development: Practice
- Level 3 Children's Care, Play, Learning and Development: Practice and Theory
- Employment